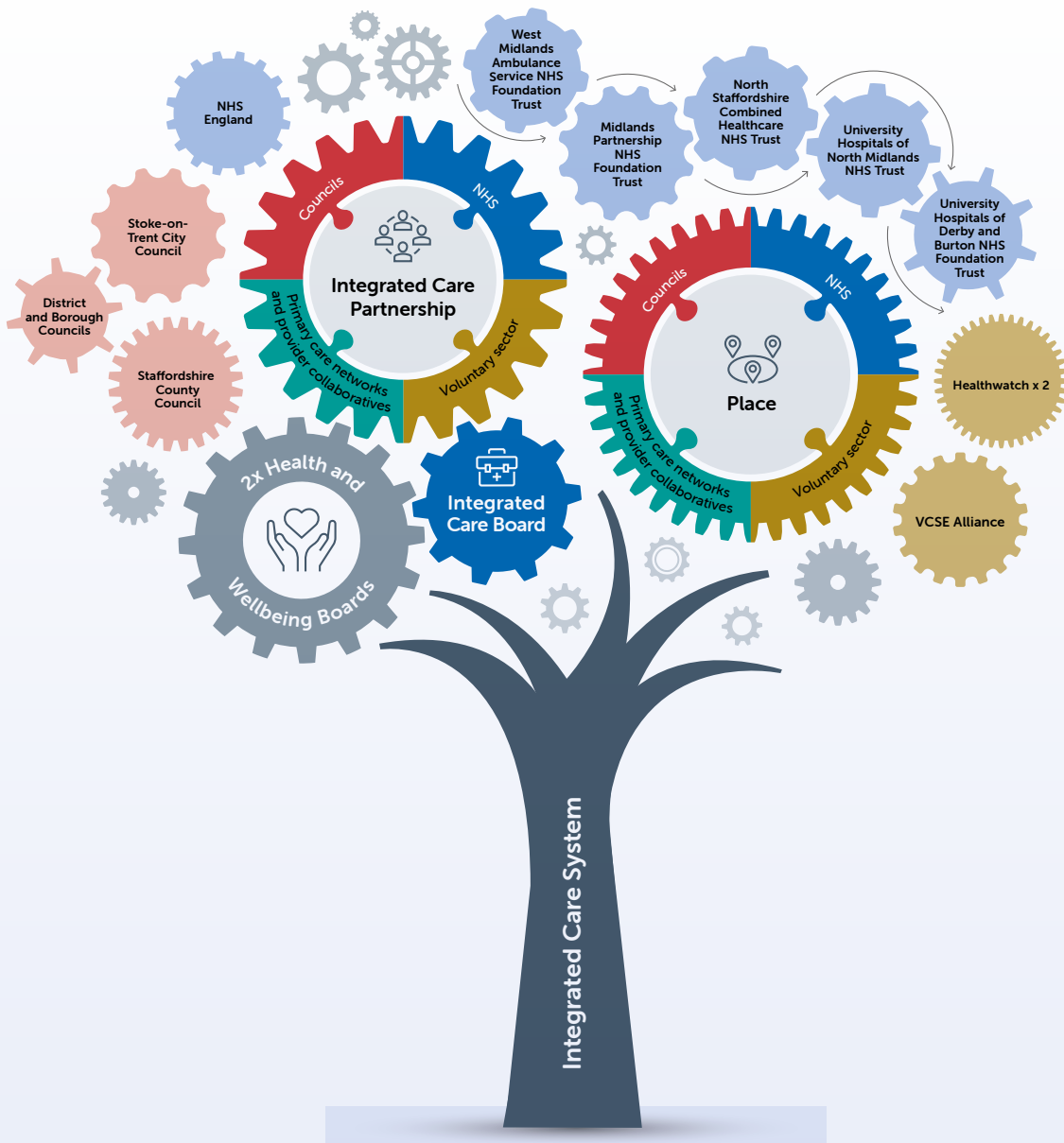


Introducing Staffordshire and Stoke-on-Trent Integrated Care System



What the ICS is

The Staffordshire and Stoke-on-Trent Integrated Care System (ICS) brings together a range of partners to redesign the way we plan and deliver health and care services.

As an ICS, local NHS, council, Healthwatch and voluntary sector organisations work together to:

- redesign care
- improve people's health
- share leadership
- deliver fair care for everyone (reducing inequalities)
- improve people's experiences of health and care.

From 1 July 2022, the partners of Staffordshire and Stoke-on-Trent's ICS will include:

1.1 million
population



1 Integrated Care Board
replacing the 6 Clinical Commissioning Groups



1 Integrated Care Partnership

Place

2 Health and Wellbeing Boards



145 GP practices

25 Primary Care Networks



1 NHS 111 and GP out of hours
• Vocare

2 major acute hospital trusts



- University Hospitals of North Midlands NHS Trust
- University Hospitals of Derby and Burton NHS Foundation Trust



1 community trust

- Midlands Partnership NHS Foundation Trust

2 mental health trusts



- North Staffordshire Combined Healthcare NHS Trust
- Midlands Partnership NHS Foundation Trust

1 ambulance trust



- West Midlands Ambulance Service NHS Foundation Trust

1 Integrated health and care system



2 Healthwatch organisations

10 councils

- 2 upper tier local authorities
- 8 district and borough councils



2 voluntary sector networks

- VAST
- Support Staffordshire



4 hospices

7 neighbouring major hospitals

331 care homes



Our vision and purpose

Our vision is

'Working with you to make Staffordshire and Stoke-on-Trent the healthiest place to live and work.'

This means we will:

- ✓ give children the best start in life so they can start school ready to learn
- ✓ have the right services to help you live independently and stay well for longer
- ✓ help you receive joined-up, timely and accessible care, which will be the best that we can provide.



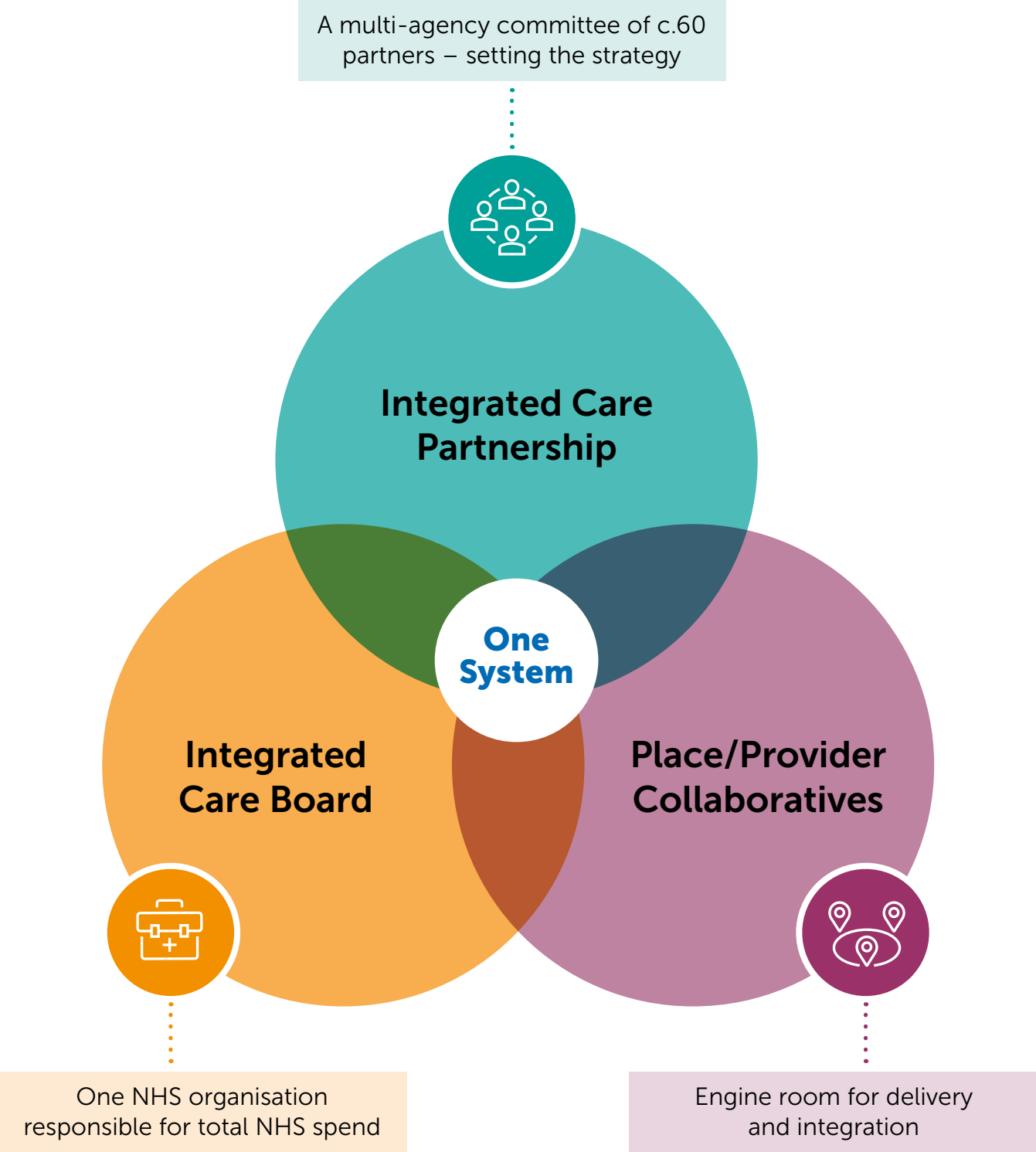
A new **Integrated Care Partnership (ICP) committee** is being set up during 2022. **This is not an organisation, but is a regular meeting that brings together** around 60 senior health and care partners. It will be responsible for developing the overall health and care strategy for the whole of Staffordshire and Stoke-on-Trent.



The **NHS Integrated Care Board (ICB)** is a new organisation that will be legally responsible for NHS spend. It will replace the previous six Clinical Commissioning Groups. In April 2023 it will also take on responsibility for pharmacy, dental, optometry (eyecare) and some specialised services.

You can find out more about these organisational changes on our [website](#).

How is the system changing?



How this will be different

Integrated care is about giving people the support they need, joined-up across local councils, the NHS, and other partners. It removes traditional divisions between hospitals and family doctors, between physical and mental health, and between NHS and council services.



As a coordinated health and care system, we will make the **best use of our money and resources**.



Making sure that everyone has fair **access to high-quality services** wherever they live will help us to **reduce inequalities**. We will also help people to improve their own health and wellbeing.



Local people will be at the **heart of decisions made** about health and care services. We will create one partnership with one strategy to connect everyone who uses, delivers, and manages health and care services.



Improved technology and joint working will help us to improve communication between services. We will give health and social care professionals **more data and technology** to help them make decisions.



We will bring services closer to the people who use them. We will promote **care provided in the community** to help people to live independent and healthy lives.



Greater choice and personal budgets will support **personalised care** and help people manage their long-term conditions.



We will help to **build strong and resilient** local communities.

Many of these changes will happen behind the scenes, so you might not notice a difference in your day-to-day care and treatment. However, over time, we hope you will see services improve and you will feel supported to stay independent and healthier for longer.

What will be different?

A needs-based approach – moving from a reactive, demand-based approach.

Focus on wellness rather than sickness - system partners taking a more proactive approach to health and care management through a focus on prevention and the causes of ill-health

Evidence-based – localised, bespoke support based on high-quality data and flexible capacity to wrap around the needs of the individual.

Culture shift – working more closely together and focusing on doing the best thing for the people who use our services.

Changes to how we work together – moving away from individual contracts to more multi-provider collaboration and place-based working; giving providers the tools and opportunity to plan and deliver services together; creating the right environment for transformation.

Initial priorities and portfolios



Population health, prevention and reducing inequalities



Planned care and cancer



Children and young people and maternity



Urgent and emergency care



Frailty and long term conditions

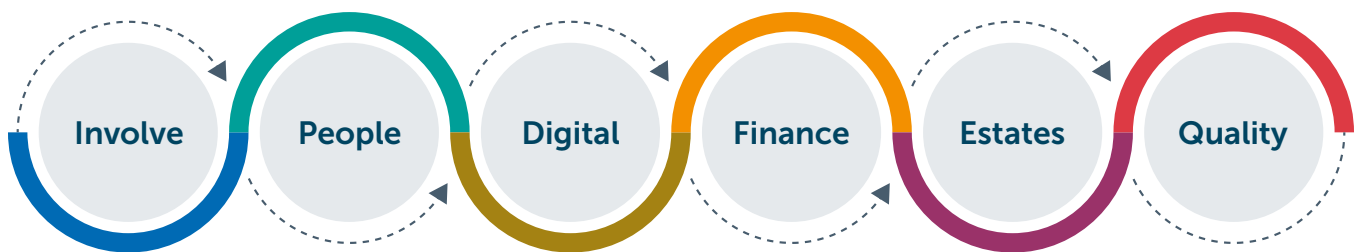


Mental health and learning disabilities and autism



Primary care

Enabling change



To deliver these priorities and improve the care and treatment we provide for local people, we will need to change the way we work.

You can help us to change the future

We are listening to the views of people who use and work in our services to see how they need to look in future. We want to understand what is working and what needs to be improved.

To support this, we have been working with our partners and the public to develop a new approach to working with our people and communities.

Please visit our [website](#) to find out more about our approach and the ways you can get involved.



For more information:



Visit our website: staffsstokeics.org.uk



Phone: **0300 123 1461**



Follow us: [@StaffsStokeICS](https://www.facebook.com/StaffsStokeICS)



Tweet us: [@StaffsStokeICS](https://twitter.com/StaffsStokeICS)



Email us: enquiries@staffsstoke.icb.nhs.uk