

Dynamic Support Register - Staffordshire and Stoke on Trent

DSR Rating Tool

NHS England's guidance on DSR Risk stratification was published in the 'Dynamic Support Register and Care (Education) and Treatment Review Policy and Guidance (2023)'. It outlines the following four descriptions for DSR RAG ratings:

Blue

Children, young people and adults **currently in a specialist or mental health inpatient services.**

Red

There is an **immediate risk** that the person will be admitted to a mental health hospital.

The person and/or their family are experiencing a crisis and **the risk of admission to a mental health hospital are not being, or cannot be managed in the community.**

Amber

There will be an **immediate risk that the person will be admitted to a mental health hospital without urgent intervention.**

There could be a significantly increased risk of the person becoming mentally unwell and/or placement/family breakdown.

Green

There are **some risks** that could lead to the person being admitted or re-admitted to a mental health hospital; **but currently these risks are being effectively managed.**

Appendix 1.

Linked processes and minimum support for each DSR rating.

Blue rating:

- For individuals who are currently an in-patient in a specialist or mental health hospital; inpatients require Commissioner Oversight Visits and inpatient C(E)TRs as per Policy.

Red rating:

- A referral for a C(E)TR or LAEP must be made at the same time as inclusion on the DSR.
- If the risk of admission for an individual already on the DSR is changed to 'Red' a referral for a C(E)TR or LAEP must be made by the lead professional.
- Where the risk of admission is immediate and particularly high a referral for a LAEP meeting should be considered.
- Referral to the keyworker service (for people aged 0-25yrs), if not already known to this service
- Keyworking teams are required to attend all LAEPs and C(E)TRs for individuals aged 0-25 yrs.

Amber rating:

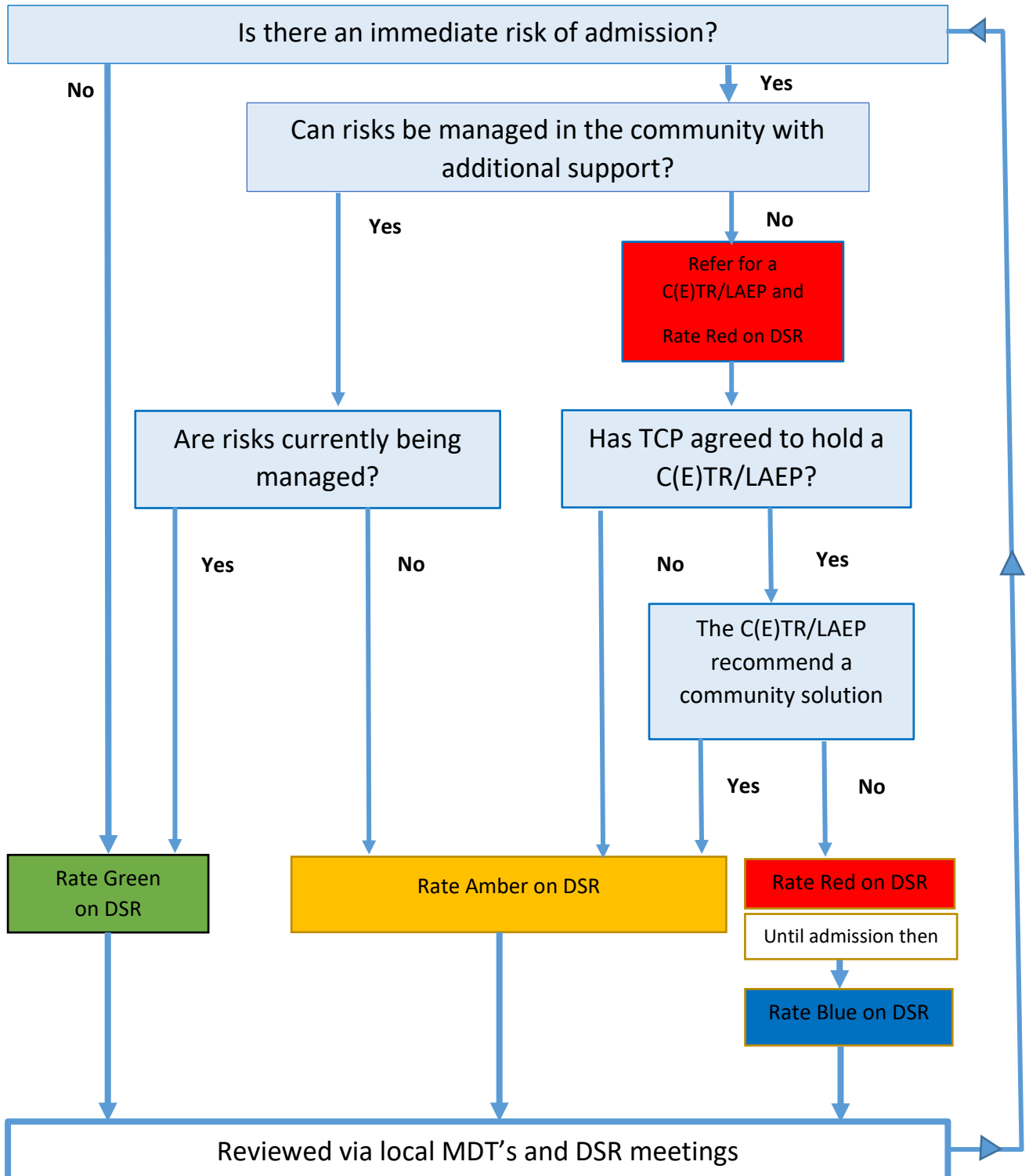
- There is a requirement for an urgent multi agency/disciplinary meeting to be held including those important to the individual.
- Referral to the keyworker service (for people aged 0-25yrs), if not already known to this service
- In the absence of a functional multi-disciplinary team (MDT), or when there are barriers to convening such a meeting, the DSR Team will offer to arrange a 'Meeting by Exception' (MbE) to assist proactive planning of support moving forwards.
- If the MDT or MbE meeting cannot mitigate the immediate risk of admission with enhanced community support then a C(E)TR referral will be considered.
- Keyworking teams are required to attend all LAEPs and C(E)TRs for individuals aged 0-25 yrs.

Green rating:

- A clearly identified MDT should be in place who can respond to the needs of the individual quickly and effectively and attend a C(E)TR if the risk of admission rating changes.

Appendix 2

DSR Rating Tool: Decision Making Flow Chart



Appendix 3

Additional guidance: **DSR Rating Tool**

The DSR Rating Tool helps referrers assess and rate the Risk of Admission to Mental Health or Specialist Hospital accurately and in line with NHS England's guidance on DSR Risk stratification (see page 21);

***'Dynamic Support Register and Care (Education) and Treatment Review
Policy and Guidance (2023)'***

Quick link - [DSR & C\(E\)TR policy and guidance](#)

The DSR Rating Tool is designed to be intuitive and self-explanatory, it is to be used solely in the context of the DSR and specifically in relation to an individual's risk of admission to a Mental Health or Specialist Hospital.

This additional guidance is to be read in conjunction with the DSR Rating Tool, Linked processes and the Decision Making Flow Chart.

Please note;

- The lack of a community solution or a placement breakdown is not in itself an appropriate reason for Hospital admission. Generally in such circumstances an Amber rating would be appropriate.
- Where an MDT is referenced, this includes Multi-Agency working, a main principle of the DSR.

Blue rated on the DSR

The NHSE guidance identifies a Blue rating as;

"Children, young people and adults currently in inpatient services"

Individuals who are currently in-patients in Mental Health or Specialist Hospitals will require commissioner oversight and inpatient C(E)TRs. These functions will be provided and actively case managed by the TCP, updates will be provided at the fortnightly DSR tracking meetings by the TCP.

Red rated on the DSR

The NHSE guidance is very clear on what constitutes a Red rating:

"There is an immediate risk that the person will be admitted to a mental health hospital" and the risks of admission "are not being, or cannot be managed in the community".

A Red rating will be appropriate when the MDT feel they have provided all available additional support within current resources to maintain an individual's safety in the community and agree that a Hospital admission is indicated.

Important, please note – *The NHSE policy and guidance is clear that informed consent must be gained or a best interest decision made for an individual to be included on the DSR. Where*

MDT decisions in relation to changes in DSR rating are referenced below, the MDT must attempt to involve and include the individual and family (where appropriate) in these decisions.

Please note that individuals rated Red on the DSR will require a referral to the TCP via their generic email address - ssicb-ses.transformingcare@nhs.net to request a C(E)TR.

In crisis situations, professionals should continue to follow their existing emergency processes to maintain a person's safety; e.g. request a LAEP meeting (via the TCP), request a Mental Health Act Assessment, contact emergency services etc...

Professionals should refer to or update the DSR following these emergency processes at their earliest opportunity.

A Red rating on the DSR will therefore include individuals;

- awaiting a C(E)TR
- who have had a C(E)TR and are awaiting admission to Mental Health or Specialist Hospital
- recently discharged from a Mental Health or Specialist Hospital

Although the TCP will lead on Red rated cases, the DSR will continue to monitor progress at fortnightly tracking meetings;

- If at the C(E)TR a recommendation for a community solution is made, the rating on the DSR will need to change to Amber.
- For individuals discharged from a Mental Health or Specialist Hospital, the MDT will decide when the Red rating can change to Amber or Green, advising the DSR at tracking meetings.

Amber rated on the DSR

The NHSE guidance is also clear in regards to an Amber rating;

“There will be an immediate risk that the person will be admitted to a mental health hospital without urgent intervention”

Amber ratings are a very high priority in terms of providing the right support at the right time to avoid an inappropriate admission to Mental Health or Specialist Hospital.

As there is an immediate risk of admission, Amber rated cases will be discussed regularly at DSR tracking meetings, while urgent multi agency interventions are managing presenting risks. Person centred MDT meetings will be crucial in supporting individuals rated Amber, if there are challenges in convening a meeting, such as gaining multi agency involvement, the DSR can arrange an initial Meeting by Exception (MbE).

If identified risks are not being effectively managed, the MDT can request a C(E)TR and change the rating on the DSR to Red, reflecting the increasing concern.

When the MDT feel that current risks are being effectively managed in the community the rating can be changed to Green, advising the DSR at tracking meetings.

Green rated on the DSR

The NHSE guidance indicates that a Green rating is where;

“There are some risks that could lead to the person being admitted or readmitted to a mental health hospital; but currently these risks are being effectively managed”

The DSR will more actively follow the progress of Green rated cases, relevant discussions at tracking meetings will be brief and contained to a quick overview of the current risks, including;

- Should the rating be changed to Amber, due to increasing risk?
- Do any long standing Green rated cases remain appropriate to be included on the DSR?

Any decision on a change in rating remains with the MDT, when it is felt a change in rating is appropriate, the DSR should be advised at tracking meetings.

With thanks to Staffordshire and Stoke-on-Trent’s TCP and Keyworking teams, who being intrinsically linked with the DSR and NHSE’s policy guidance, have assisted in the development of the DSR Rating Tool.