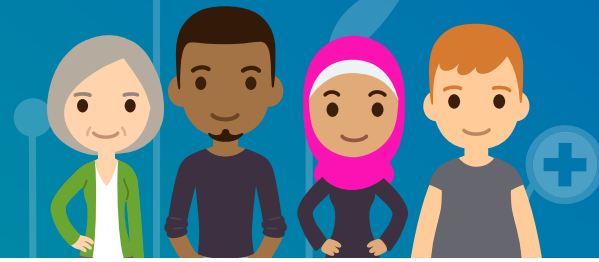


# One Health and Care information Leaflet



## What is One Health and Care?

One Health and Care is a confidential digital shared care record, used by different organisations involved in Health and Social care across Staffordshire, Stoke-on-Trent, Shropshire and the Black County. A list of partner organisations can be seen below. It allows doctors, nurses, and other registered health and social care professionals, directly involved in a patient or client's care, to view relevant information to provide better and safer care.

Information is only viewable by permitted health and care staff in accordance with local system access policies. All data viewed within One Health and Care is fully auditable.

When a patient or client visits any of the organisations listed below, or use services provided by them, staff directly involved in their care will have access to the important information from health and social care records:

Staffordshire and Stoke-on-Trent GP practices

University Hospitals of North Midlands NHS Trust

University Hospitals of Derby and Burton NHS Foundation Trust

Midlands Partnership NHS Foundation Trust

North Staffordshire Combined Healthcare NHS Trust

Staffordshire County Council (Social Care)

Stoke-on-Trent City Council (Social Care)

Continuing Healthcare services

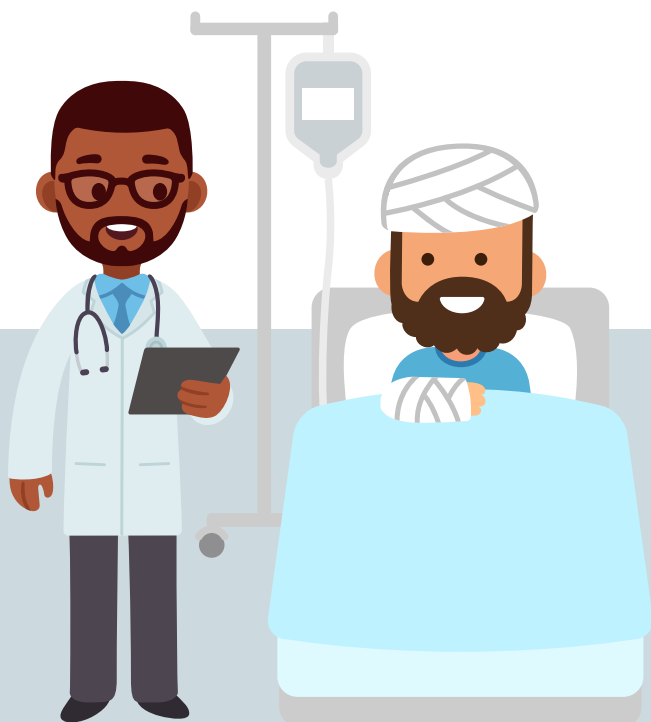
West Midlands Ambulance Service.

## What information can you see in One Health and Care?

The information that the staff directly involved in a patient or client's care will be able to view is listed below:

- Name, date of birth, gender, address, telephone number, NHS number
- GP practice and registered GP
- Medications, allergies, ongoing and historic conditions, immunisations and diagnoses
- Test results, hospital referrals, admissions, discharges and clinics attended
- Social and mental health information and care plans.

This will help health and care professionals to provide better and safer care. Information will be held securely and only shared with staff members in the partnership organisations who are directly involved in the patient's care and support. All staff are bound by professional confidentiality. Sensitive information such as attendance at sexual health clinics, fertility treatment records, and records relating to gender reassignment will not be included.



## What are the benefits of using One Health and Care?

- It reduces how often patients or clients need to repeat their health and social care history to individuals involved in their care and support.
- It improves patient and client safety as health and care professionals have up to date medications and allergy information direct from the GP system.
- It improves clinical decision making, as health and care professionals can see details of recent visits, any tests requested, and prescriptions issued.
- It improves efficiency by ensuring the health and care professionals have appropriate and timely access to information to inform patient and clients' care.
- It improves cost efficiency by reducing the need to repeat investigations or tests which may have already been carried out in other care settings.
- Reduce the amount of time staff spend chasing patient/client information.
- Improve operational efficiency with health and care professionals obtaining information for patient or client care, from one system.



For more information about One Health and Care, visit our [website](#).

For any access queries, please contact your local help desk.

For any project queries, please email: [onehealthandcare@nhs.net](mailto:onehealthandcare@nhs.net)